



ALTERNATIVE HOSPITAL QUARANTINE (AHQ) AT RATCHAPHRUEK HOSPITAL

Due to the **COVID-19** pandemic, the Thai authorities imposed the regulations regarding a permission to enter the Kingdom of Thailand, including the quarantine upon arrival.

Ratchaphruek Hospital remains ready to accept the patients to provide state-of-the-art healthcare as well as quarantine of the patients and their companions during this difficult time.

REQUIRED DOCUMENTS :

- Copy of the patient's passport with a certified signature (newly signed).
- Copy of the companion's passport(s) with certified signature(s) (newly signed) [max. 3 companions].
- Updated medical report with relevant investigation results.
- Referral letter from a doctor in current country, stating the need to seek for treatment in Thailand.

Contact

International

E-mail : medicaltravel@rph.co.th

Domestic

Tel. +66 (0) 4333 3555 Extension 0 , Mobile phone : +66 083-666-7788

Line : @RPHLine FB : RatchaphruekHospital Website : www.rph.co.th App : RPH Care



โรงพยาบาลราชพฤกษ์
Ratchaphruek Hospital



Joint Commission
International

REQUIRED DOCUMENTS :

- Proof of financial status, e.g. bank statement.
- Insurance policy (or Guarantee letter from the Embassy) covering the treatment of COVID-19 incurred in Thailand, medical transportation and repatriation if needed, minimum amount of USD100,000 each, for the patient and each companion. Affidavit of support. (Only for patient with companions. Prepared by Ratchaphruek in attachment, signed by the patient and/or companions.)
- Letter of intention and consent for quarantine. (Prepared by Ratchaphruek in attachment, signed by the patient and/or companions.)
- Flight ticket. (if available)
- Fit-to-fly certificate issued by a licensed doctor in the current country, within 72 hours before departure. **(Please do not seek for this item yet. We shall alert you when to visit the doctor for this certificate.)**
- COVID-19 test result within 72 hours before departure. **(DO NOT attempt to get the COVID-19 test before the approval is confirmed.)**

After receiving and processing the documents above, Ratchaphruek Hospital will submit a **Confirmation Letter** to the Thai authorities in order to request for a permission for the patient and companions to enter the Kingdom of Thailand. Once approved, a copy of the **Confirmation Letter** will be sent to the patient to be submitted to the Royal Thai Embassy in the current country, then the patient will receive the **Certificate of Entry (COE)** from the Embassy.

Contact

International

E-mail : medicaltravel@rph.co.th

Domestic

Tel. +66 (0) 4333 3555 Extension 0 , Mobile phone : +66 083-666-7788

Line : @RPHLine FB : RatchapruekHospital Website : www.rph.co.th App : RPH Care



โรงพยาบาลราชพฤกษ์
Ratchaphruek Hospital



Joint Commission
International

ALTERNATIVE HOSPITAL QUARANTINE (AHQ) AT RATCHAPHRUEK HOSPITAL

PROTOCOL FOR QUARANTINE IN RATCHAPHRUEK HOSPITAL:

- A patient and companion(s) will be subject to a quarantine in Ratchaphruek Hospital for the duration of 14+2 days from the day of arrival into the Kingdom of Thailand. (The first day of arrival is referred to as day 0 and quarantine is completed on day 15).
- Only one companion can stay with the patient in the negative-pressure room, the 2nd and 3rd companion(s) will be in a (separated) single room during the quarantine period.
- A patient will only be allowed to leave the room for medical investigations and procedures as required, while companion(s) will remain in the room throughout the quarantine period, except for visiting the patient at certain times of the day.
- Fever and respiratory tract symptoms will be monitored on a daily basis.
- Nasopharyngeal and oral swabs for real-time Polymerase Chain Reaction (rt-PCR) test for COVID-19 (SARS-CoV-2) will be performed 3 times : on day 0, 5 and 14.
- If the test result for COVID-19 is detectable (positive), the infected individual will be cared for in Ratchaphruek Hospital on their own expenses (under insurance coverage, conditions may apply).
- The approvals from the Embassy of the patient's nationality as well as the Ministry of Foreign Affairs are needed before returning home (the process takes 2 – 3 days).

Contact

International

E-mail : medicaltravel@rph.co.th

Domestic

Tel. +66 (0) 4333 3555 Extension 0 , Mobile phone : +66 083-666-7788

Line : @RPHLine FB : RatchapruekHospital Website : www.rph.co.th App : RPH Care



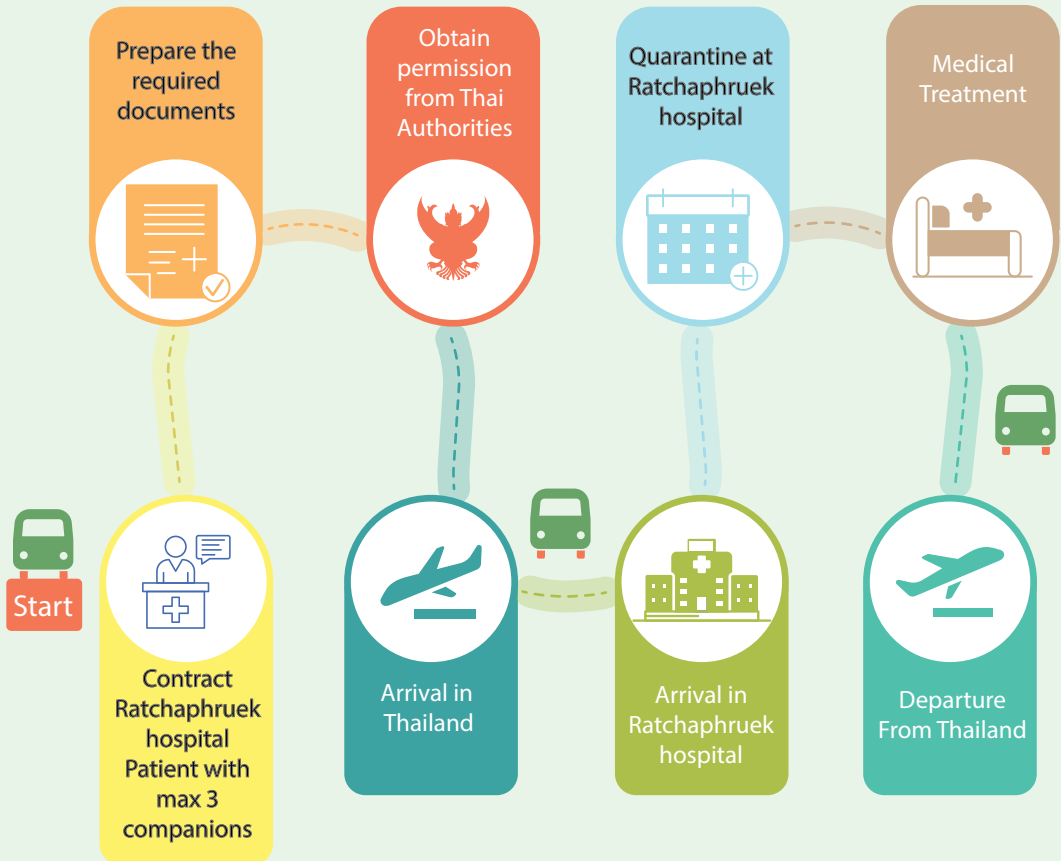
โรงพยาบาลราชพฤกษ์
Ratchaphruek Hospital



Joint Commission
International

PROTOCOL FOR QUARANTINE IN RATCHAPHRUEK HOSPITAL:

Foreign nationals, who are permitted to enter the Kingdom of Thailand as patients (see page 3) seeking for medical care, can only be quarantined in the hospital upon arrival.



*The treatment can commence right after the negative COVID 19 test on day 0 is available

Contact

International

E-mail : medicaltravel@rph.co.th

Domestic

Tel. +66 (0) 4333 3555 Extension 0 , Mobile phone : +66 083-666-7788

Line : @RPHLine FB : RatchaphruekHospital Website : www.rph.co.th App : RPH Care



โรงพยาบาลราชพฤกษ์
Ratchaphruek Hospital



Joint Commission
International

ALTERNATIVE HOSPITAL QUARANTINE (AHQ) AT RATCHAPHRUEK HOSPITAL

Patients and their entourages travelling from the following countries are allowed to receive medical treatment under Alternative Hospital Quarantine (AHQ):

Updated: 15 October 2020

1. Commonwealth of Australia
2. Realm of New Zealand
3. Republic of Singapore
4. Republic of Korea (South Korea)
5. Japan
6. Republic of Finland
7. Kingdom of Bahrain
8. Mongolia
9. Kingdom of Thailand
10. Republic of Latvia
11. State Of Qatar
12. Kingdom of Cambodia
13. Lao People's Democratic Republic (Laos)
14. Republic of Rwanda
15. Taiwan
16. Socialist Republic of Vietnam
17. Kingdom of Sweden
18. Kingdom of Saudi Arabia
19. The People's Republic of China
20. Republic of Cuba
21. Hong Kong Special Administrative Region of the People's Republic of China
22. People's Republic of China (Macao Special Administrative Region)
23. Republic of Estonia
24. Republic of Fiji
25. Republic of Cote d'Ivoire (Ivory Coast)
26. Oriental Republic of Uruguay
27. Republic of Kazakhstan
28. Republic of Belarus
29. Kingdom of Denmark
30. Federation of Malaysia
31. Kingdom of Norway
32. Canada
33. United Arab Emirates (UAE)
34. Principality of Liechtenstein
35. Republic of Slovenia
36. State of Kuwait
37. Republic of South Africa
38. Republic of Mauritius
39. Republic of Namibia
40. Republic of Seychelles
41. Republic of Armenia
42. Federal Democratic Republic of Ethiopia
43. Republic of Georgia
44. Republic of Lithuania
45. Sultanate of Oman
46. Republic of Botswana
47. Kingdom of Eswatini
48. Republic of Maldives
49. Republic of Kenya
50. Kyrgyz Republic
51. Republic of Moldova
52. Republic of Uganda
53. Republic of Chile
54. Federal Republic of Germany
55. Republic of India
56. The United Mexican States (Mexico)
57. Republic of Turkey
58. Principality of Andorra
59. Commonwealth of the Bahamas
60. Barbados
61. Belize
62. Antigua and Barbuda
63. Nation of Brunei, the Abode of Peace (Brunei Darussalam)

Contact

International E-mail : medicaltravel@rph.co.th

Domestic

Tel. +66 (0) 4333 3555 Extension 0 , Mobile phone : +66 083-666-7788

Line : @RPHLine FB : RatchapruekHospital Website : www.rph.co.th App : RPH Care



โรงพยาบาลราชพฤกษ์
Ratchaphruek Hospital



Joint Commission
International

ALTERNATIVE HOSPITAL QUARANTINE (AHQ) AT RATCHAPHRUEK HOSPITAL

- | | | |
|--|---|--|
| 64. Republic of Tajikistan | 87. Republic of Angola | 113. Republic of Benin |
| 65. Republic of Cape Verde | 88. Republic of Azerbaijan | 114. Kingdom of Bhutan |
| 66. Republic of Congo (Congo-Brazzaville) | 89. Plurinational State of Bolivia | 115. State of Eritrea |
| 67. Republic of Cyprus | 90. Republic of Bulgaria | 116. Republic of the Niger |
| 68. Syrian Arab Republic (Syria) | 91. Republic of Croatia | 117. Republic of Guinea |
| 69. Commonwealth of Dominica | 92. Dominican Republic | 118. Kingdom of Lesotho |
| 70. Republic of Equatorial Guinea | 93. Bosnia and Herzegovina | 119. Republic of Liberia |
| 71. Republic of Yemen | 94. Republic of Ecuador | 120. Republic of Mali |
| 72. Republic of Haiti | 95. The Bolivarian Republic of Venezuela | 121. Republic of Senegal |
| 73. Grenada | 96. Republic of El Salvador | 122. Democratic Socialist Republic of Sri Lanka |
| 74. Cooperative Republic of Guyana | 97. Hellenic Republic (Greece) | 123. Republic of Albania |
| 75. Republic of Iceland | 98. Arab Republic of Egypt | 124. State of Libya |
| 76. Saint Lucia | 99. Republic of Guatemala | 125. Republic of Mozambique |
| 77. Republic of Suriname | 100. Republic of Honduras | 126. Republic of North Macedonia |
| 78. Principality of Monaco | 101. Republic of Ireland | |
| 79. Republic of Malta | 102. Jamaica | |
| 80. Independent State of Papua New Guinea | 103. Montenegro | |
| 81. Republic of San Marino | 104. Grand Duchy of Luxembourg | |
| 82. Republic of Nicaragua | 105. Republic of Panama | |
| 83. Federation of Saint Kitts and Nevis | 106. Republic of Paraguay | |
| 84. Republic of Trinidad and Tobago | 107. Slovak Republic (Slovakia) | |
| 85. Saint Vincent and the Grenadines | 108. Republic of Uzbekistan | |
| 86. People's Democratic Republic of Algeria | 109. Republic of Serbia | |
| | 110. Islamic Republic of Pakistan | |
| | 111. Republic of the Philippines | |
| | 112. Democratic Republic of Afghanistan | |

Contact

International

E-mail : medicaltravel@rph.co.th

Domestic

Tel. +66 (0) 4333 3555 Extension 0 , Mobile phone : +66 083-666-7788

Line : @RPHLine FB : RatchapruekHospital Website : www.rph.co.th App : RPH Care



โรงพยาบาลราชพฤกษ์
Ratchaphruek Hospital



Joint Commission
International

QUARANTINE PACKAGE COST

- 1 patient + 1 companion from THB 100,000 (1 Deluxe room*)
- 1 patient + 2 companions from THB 157,000 (2 Deluxe rooms*)
- 1 patient + 3 companions from THB 214,000 (3 Deluxe rooms*)



*Inclusion: Regular room charge for 15 nights, 3 meals per day and 3 COVID-19 tests (on day 0, 5 and 14) with daily fever monitoring.

Remarks:

- The actual cost may vary, e.g. additional inpatient or ICU charges, depending on the patient's condition.
- Additional room charge of **THB 2,500** / night will be incurred, in case the patient is in the ICU and the 1 companion is in the Deluxe room alone.

Contact

International

E-mail : medicaltravel@rph.co.th

Domestic

Tel. +66 (0) 4333 3555 Extension 0 , Mobile phone : +66 083-666-7788

Line : @RPHLine FB : RatchapruekHospital Website : www.rph.co.th App : RPH Care



โรงพยาบาลราชพฤกษ์
Ratchapruek Hospital



Joint Commission
International