



ALTERNATIVE HOSPITAL QUARANTINE (AHQ) AT RATCHAPHRUEK HOSPITAL

Due to the **COVID-19** pandemic, the Thai authorities imposed the regulations regarding a permission to enter the Kingdom of Thailand, including the quarantine upon arrival.

Ratchaphruek Hospital remains ready to accept the patients to provide state-of-the-art healthcare as well as quarantine of the patients and their companions during this difficult time.

REQUIRED DOCUMENTS :

- Copy of the patient's passport with a certified signature (newly signed).
- Copy of the companion's passport(s) with certified signature(s) (newly signed) [max. 3 companions].
- Updated medical report with relevant investigation results.
- Referral letter from a doctor in current country, stating the need to seek for treatment in Thailand.

Contact

International

E-mail : medicaltravel@rph.co.th

Domestic

Tel. +66 (0) 4333 3555 Extension 0 , Mobile phone : +66 083-666-7788

Line : @RPHLine FB : RatchaphruekHospital Website : www.rph.co.th App : RPH Care



โรงพยาบาลราชพฤกษ์
Ratchaphruek Hospital



Joint Commission
International

REQUIRED DOCUMENTS :

- Proof of financial status, e.g. bank statement.
- Insurance policy (or Guarantee letter from the Embassy) covering the treatment of COVID-19 incurred in Thailand, medical transportation and repatriation if needed, minimum amount of USD100,000 each, for the patient and each companion. Affidavit of support. (Only for patient with companions. Prepared by Ratchaphruek in attachment, signed by the patient and/or companions.)
- Letter of intention and consent for quarantine. (Prepared by Ratchaphruek in attachment, signed by the patient and/or companions.)
- Flight ticket. (if available)
- Fit-to-fly certificate issued by a licensed doctor in the current country, within 72 hours before departure. **(Please do not seek for this item yet. We shall alert you when to visit the doctor for this certificate.)**
- COVID-19 test result within 72 hours before departure. **(DO NOT attempt to get the COVID-19 test before the approval is confirmed.)**

After receiving and processing the documents above, Ratchaphruek Hospital will submit a **Confirmation Letter** to the Thai authorities in order to request for a permission for the patient and companions to enter the Kingdom of Thailand. Once approved, a copy of the **Confirmation Letter** will be sent to the patient to be submitted to the Royal Thai Embassy in the current country, then the patient will receive the **Certificate of Entry (COE)** from the Embassy.

Contact

International

E-mail : medicaltravel@rph.co.th

Domestic

Tel. +66 (0) 4333 3555 Extension 0 , Mobile phone : +66 083-666-7788

Line : @RPHLine FB : RatchaphruekHospital Website : www.rph.co.th App : RPH Care



โรงพยาบาลราชพฤกษ์
Ratchaphruek Hospital



Joint Commission
International

ALTERNATIVE HOSPITAL QUARANTINE (AHQ) AT RATCHAPHRUEK HOSPITAL

PROTOCOL FOR QUARANTINE IN RATCHAPHRUEK HOSPITAL:

- A patient and companion(s) will be subject to a quarantine in Ratchaphruek Hospital for the duration of 14+2 days from the day of arrival into the Kingdom of Thailand. (The first day of arrival is referred to as day 0 and quarantine is completed on day 15).
- Only one companion can stay with the patient in the negative-pressure room, the 2nd and 3rd companion(s) will be in a (separated) single room during the quarantine period.
- A patient will only be allowed to leave the room for medical investigations and procedures as required, while companion(s) will remain in the room throughout the quarantine period, except for visiting the patient at certain times of the day.
- Fever and respiratory tract symptoms will be monitored on a daily basis.
- Nasopharyngeal and oral swabs for real-time Polymerase Chain Reaction (rt-PCR) test for COVID-19 (SARS-CoV-2) will be performed 3 times : on day 0, 5 and 14.
- If the test result for COVID-19 is detectable (positive), the infected individual will be cared for in Ratchaphruek Hospital on their own expenses (under insurance coverage, conditions may apply).
- The approvals from the Embassy of the patient's nationality as well as the Ministry of Foreign Affairs are needed before returning home (the process takes 2 – 3 days).

Contact

International

E-mail : medicaltravel@rph.co.th

Domestic

Tel. +66 (0) 4333 3555 Extension 0 , Mobile phone : +66 083-666-7788

Line : @RPHLine FB : RatchapruekHospital Website : www.rph.co.th App : RPH Care



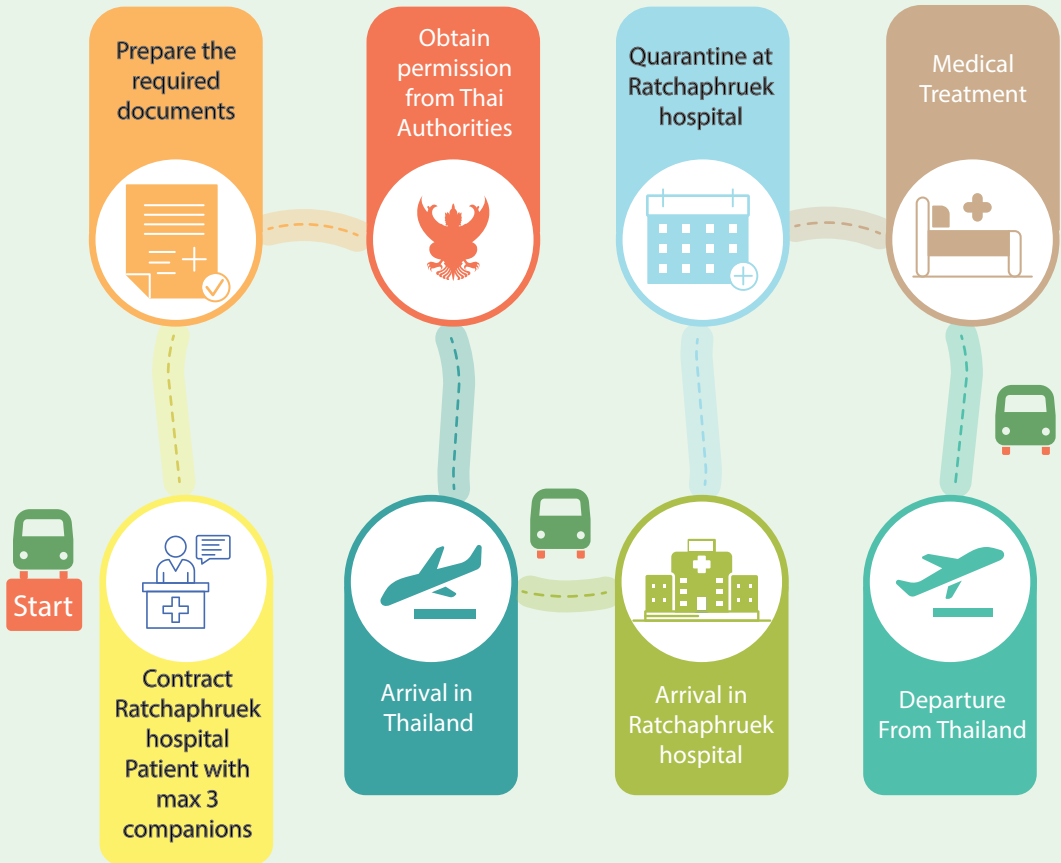
โรงพยาบาลราชพฤกษ์
Ratchaphruek Hospital



Joint Commission
International

PROTOCOL FOR QUARANTINE IN RATCHAPHRUEK HOSPITAL:

Foreign nationals, who are permitted to enter the Kingdom of Thailand as patients (see page 3) seeking for medical care, can only be quarantined in the hospital upon arrival.



*The treatment can commence right after the negative COVID 19 test on day 0 is available

Contact

International

E-mail : medicaltravel@rph.co.th

Domestic

Tel. +66 (0) 4333 3555 Extension 0 , Mobile phone : +66 083-666-7788

Line : @RPHLine FB : RatchaphruekHospital Website : www.rph.co.th App : RPH Care



โรงพยาบาลราชพฤกษ์
Ratchaphruek Hospital



Joint Commission
International

ALTERNATIVE HOSPITAL QUARANTINE (AHQ) AT RATCHAPHRUEK HOSPITAL

Patients and their entourages travelling from the following countries are allowed to receive medical treatment under Alternative Hospital Quarantine (AHQ):

Updated : 1 October 2020

- | | | |
|---|---------------------------------------|--|
| 1. Realm of New Zealand | 20. Republic of Cuba | 43. Kingdom of Saudi Arabia |
| 2. Republic of Finland | 21. Commonwealth of Australia | 44. Republic of Serbia |
| 3. Kingdom of Thailand | 22. Republic of Korea (South Korea) | 45. Islamic Republic of Pakistan |
| 4. Republic of Latvia | 23. State of Qatar | 46. Principality of Liechtenstein |
| 5. Mongolia | 24. Kingdom of Sweden | 47. Republic of Georgia |
| 6. Kingdom of Cambodia | 25. Swiss Confederation (Switzerland) | 48. Republic of Mauritius |
| 7. Lao People's Democratic Republic (Laos) | 26. Republic of Belarus | 49. Republic of Seychelles |
| 8. Taiwan | 27. Republic of Croatia | 50. Slovak Republic (Slovakia) |
| 9. Socialist Republic of Vietnam | 28. Kingdom of Norway | 51. Nation of Brunei, the Abode of Peace (Brunei Darussalam) |
| 10. The People's Republic of China | 29. Kingdom of Denmark | 52. Grenada |
| 11. Federation of Malaysia | 30. Japan | 53. Republic of Trinidad and Tobago |
| 12. Republic of Estonia | 31. Republic of Lithuania | 54. Republic of San Marino |
| 13. Oriental Republic of Uruguay | 32. Grand Duchy of Luxembourg | 55. Saint Lucia |
| 14. Hong Kong Special Administrative Region of the People's Republic of China | 33. Republic of Iceland | 56. Commonwealth of Dominica |
| 15. People's Republic of China (Macao Special Administrative Region) | 34. Republic of Slovenia | 57. Principality of Andorra |
| 16. Republic of Singapore | 35. Canada | 58. Republic of Cyprus |
| 17. Republic of Fiji | 36. United Arab Emirates (UAE) | 59. Republic of Nicaragua |
| 18. Republic of Côte d'Ivoire (Ivory Coast) | 37. Federal Republic of Germany | 60. Principality of Monaco |
| 19. Republic of Kazakhstan | 38. United Kingdom | 61. Saint Vincent and the Grenadines |
| | 39. Republic of Turkey | |
| | 40. Republic of Austria | |
| | 41. Republic of Chile | |
| | 42. Republic of Ireland | |

Contact

International E-mail : medicaltravel@rph.co.th

Domestic

Tel. +66 (0) 4333 3555 Extension 0 , Mobile phone : +66 083-666-7788

Line : @RPHLine FB : RatchapruekHospital Website : www.rph.co.th App : RPH Care



Joint Commission
International

ALTERNATIVE HOSPITAL QUARANTINE (AHQ) AT RATCHAPHRUEK HOSPITAL

- | | | |
|---|---|---|
| 62. Republic of Tajikistan | 87. Hashemite Kingdom of Jordan | 114. Republic of Azerbaijan |
| 63. Federation of Saint Kitts and Nevis | 88. Republic of the Niger | 115. Bosnia and Herzegovina |
| 64. Jamaica | 89. Republic of Senegal | 116. Republic of Honduras |
| 65. Commonwealth of the Bahamas | 90. Republic of Mali | 117. Republic of Guatemala |
| 66. Antigua and Barbuda | 91. Republic of Benin | 118. Hellenic Republic (Greece) |
| 67. Republic of Suriname | 92. State of Eritrea | 119. Republic of Paraguay |
| 68. Belize | 93. Republic of Mozambique | 120. Dominican Republic |
| 69. Cooperative Republic of Guyana | 94. Kingdom of Lesotho | 121. Republic of Rwanda |
| 70. Republic of Yemen | 95. Democratic Republic of Afghanistan | 122. Republic of Albania |
| 71. Republic of Haiti | 96. Republic of Liberia | 123. Republic of Moldova |
| 72. Syrian Arab Republic (Syria) | 97. 97. Republic of the Union of Myanmar
suspended | 124. Republic of Kenya |
| 73. Republic of Angola | 98. Republic of Guinea | 125. Republic of Maldives |
| 74. Montenegro | 99. Kingdom of Bahrain | 126. Tunisian Republic |
| 75. Republic of Cape Verde | 100. State of Kuwait | 127. State of Libya |
| 76. Republic of Equatorial Guinea | 101. Republic of Lebanon | 128. Republic of North Macedonia |
| 77. Republic of Congo (Congo-Brazzaville) | 102. Kyrgyz Republic | 129. The United Mexican States (Mexico) |
| 78. Independent State of Papua New Guinea | 103. Sultanate of Oman | 130. Federal Democratic Republic of Ethiopia |
| 79. Barbados | 104. Republic of Namibia | 131. Plurinational State of Bolivia |
| 80. Republic of Malta | 105. Republic of Armenia | 132. The Bolivarian Republic of Venezuela |
| 81. Kingdom of Hungary | 106. Republic of Poland | |
| 82. Republic of Uganda | 107. Arab Republic of Egypt | |
| 83. Democratic Socialist Republic of Sri Lanka | 108. Republic of El Salvador | |
| 84. Kingdom of Eswatini | 109. Republic of Portugal | |
| 85. Republic of Botswana | 110. People's Democratic Republic of Algeria | |
| 86. Kingdom of Bhutan | 111. Republic of Bulgaria | |
| | 112. Republic of Uzbekistan | |
| | 113. Republic of Panama | |

Contact

International

E-mail : medicaltravel@rph.co.th

Domestic

Tel. +66 (0) 4333 3555 Extension 0 , Mobile phone : +66 083-666-7788

Line : @RPHLine FB : RatchaphruekHospital Website : www.rph.co.th App : RPH Care



โรงพยาบาลราชพฤกษ์
Ratchaphruek Hospital



Joint Commission
International

QUARANTINE PACKAGE COST

- 1 patient + 1 companion from THB 100,000 (1 Deluxe room*)
- 1 patient + 2 companions from THB 157,000 (2 Deluxe rooms*)
- 1 patient + 3 companions from THB 214,000 (3 Deluxe rooms*)



*Inclusion: Regular room charge for 15 nights, 3 meals per day and 3 COVID-19 tests (on day 0, 5 and 14) with daily fever monitoring.

Remarks:

- The actual cost may vary, e.g. additional inpatient or ICU charges, depending on the patient's condition.
- Additional room charge of **THB 2,500** / night will be incurred, in case the patient is in the ICU and the 1 companion is in the Deluxe room alone.

Contact

International

E-mail : medicaltravel@rph.co.th

Domestic

Tel. +66 (0) 4333 3555 Extension 0 , Mobile phone : +66 083-666-7788

Line : @RPHLine FB : RatchapruekHospital Website : www.rph.co.th App : RPH Care



โรงพยาบาลราชพฤกษ์
Ratchapruek Hospital



Joint Commission
International